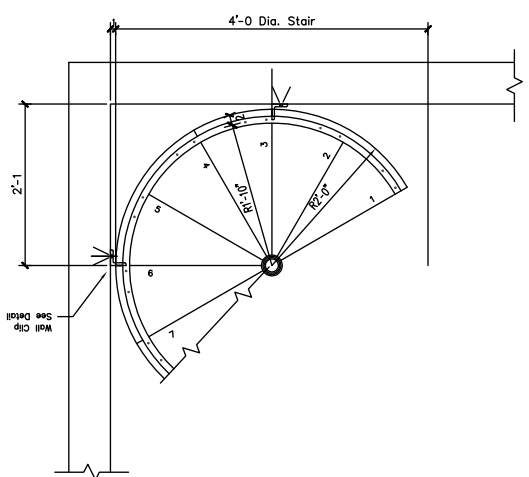


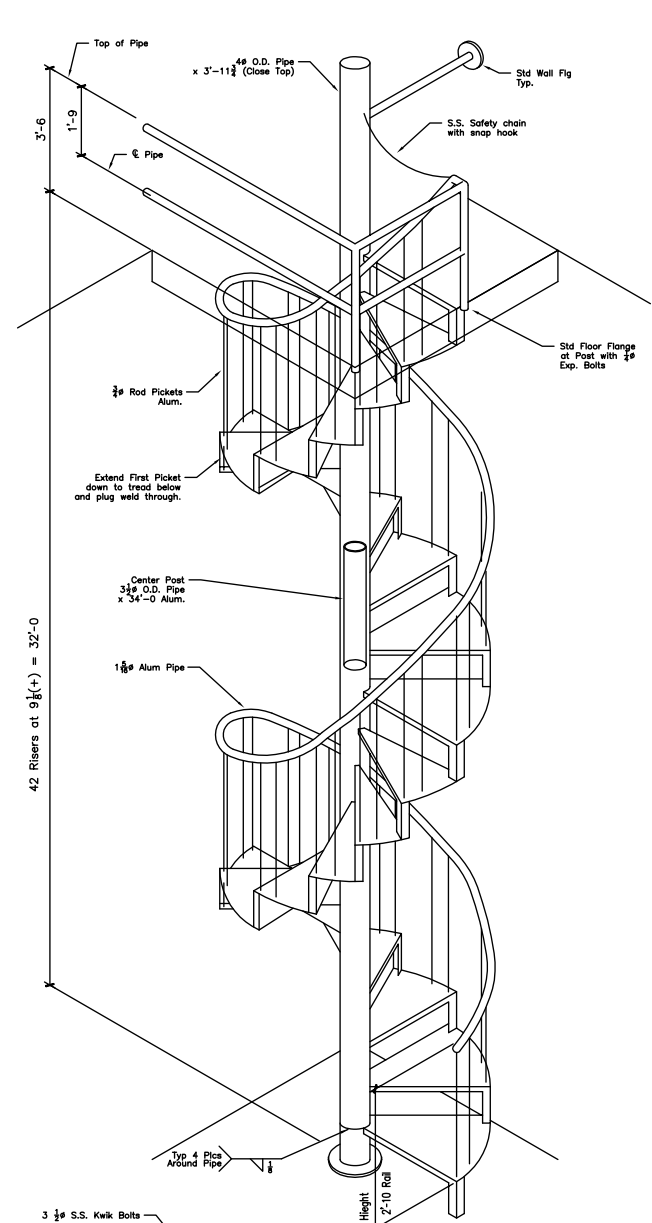
Plan at Motor Room

1" = 1'-0"

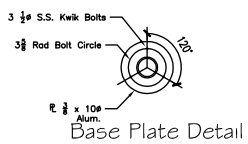


Plan at Wet Well

1" = 1'-0"



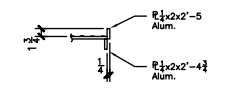
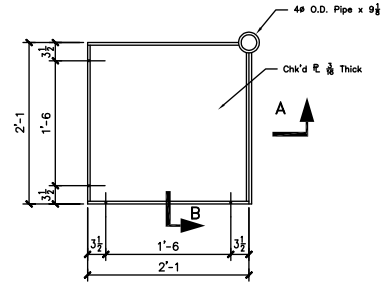
42 Risers at 9 1/2 (+) = 32'-0"



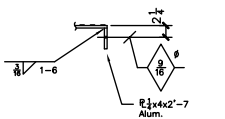
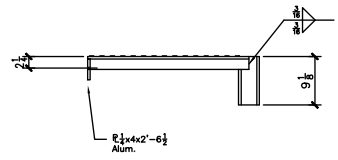
Base Plate Detail

1" = 1'-0"

NOTE:
VIEW SHOWN IS A REPRESENTATION ONLY. SEE PLAN AT WET WELL FOR CORRECT BOTTOM ORIENTATION.

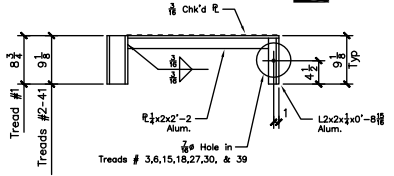
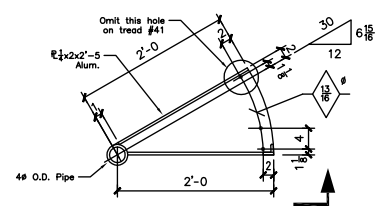


Section A



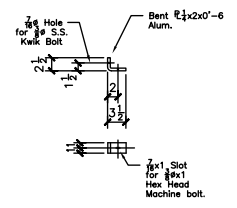
Section B

One Platform Req'd
1" = 1'-0"



Tread Details

1" = 1'-0"



Detail at Wall Clip

Req'd - 6 at treads # 3,6,15,18,27,30, & 39

REV.	DESCRIPTION	BY	DATE
FOR APPROVAL:	9-9-97	TO SHOP:	TO FIELD:
APPROVED BY:		AS BUILT:	
 AMERICAN STEEL, INC. <small>3322 Chesapeake Blvd. • Norfolk, Virginia 23513 • (804) 657-5273</small>			
JOB NAME:	Oceana South Ind, Park P.S.	DRAWN BY:	CWH
LOCATION:	Virginia Beach, Virginia	CHECKED BY:	
CONTRACTOR:	B.L. Jones	SCALE:	1" = 1'-0"
DESCRIPTION:	SPIRAL STAIR	DATE:	7-6-98
		JOB NUMBER:	128
		SHEET:	3

PDA Consulting
CONFIDENTIAL